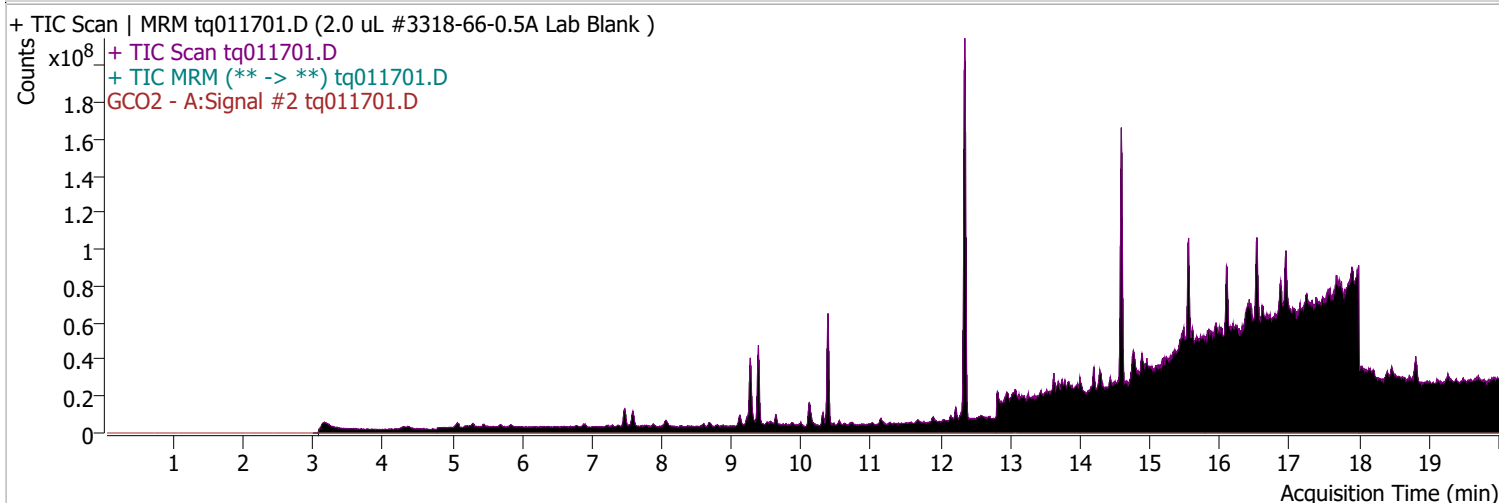
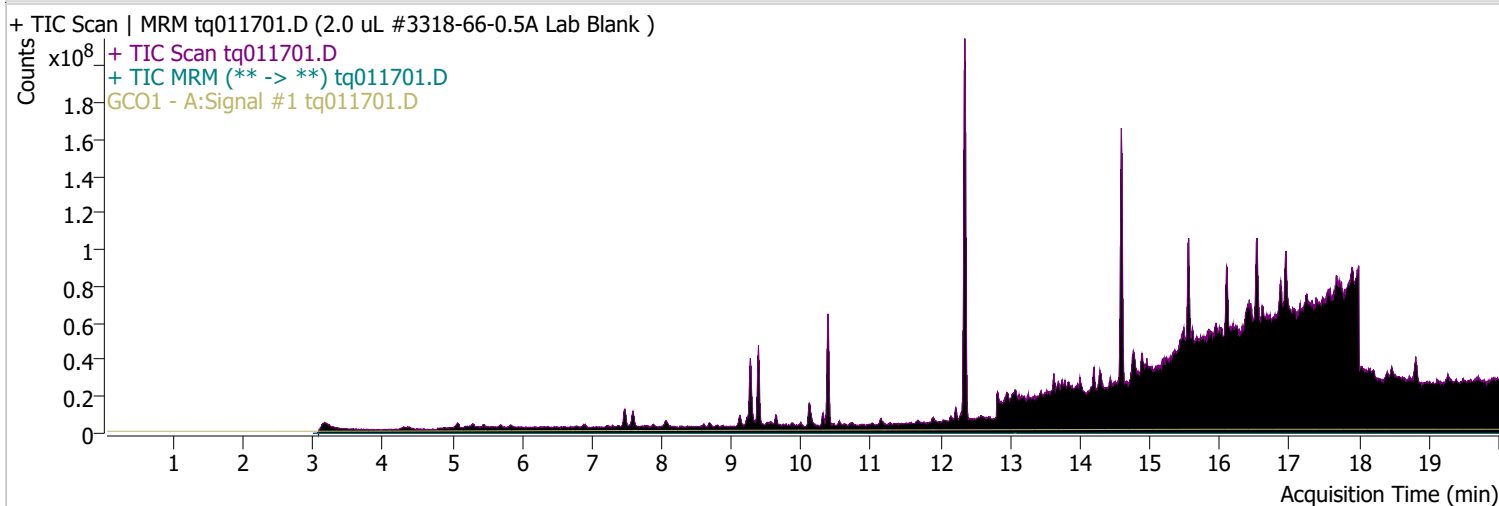
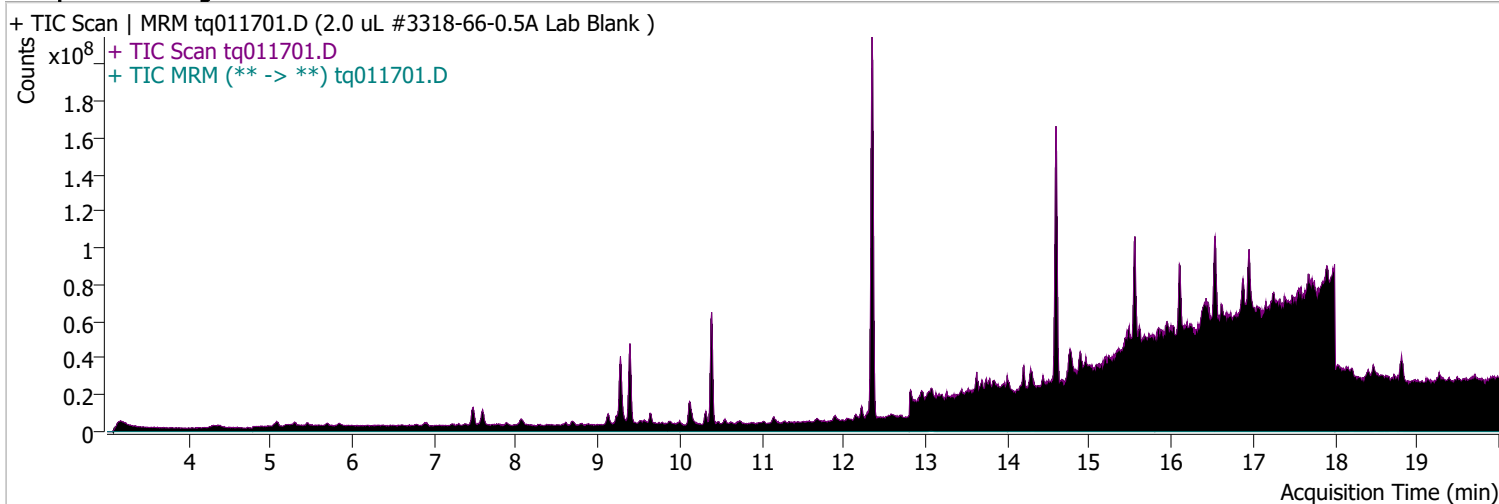


Quantitative Analysis Sample Report

Batch Path	D:\MassHunter\GCMS\1\data\17jan23\QuantResults\17jan23.batch.bin		
Analysis Time	1/17/2023 10:28 AM	Analyst Name	TAI\us32_usr_ins22923
Report Time	1/18/2023 2:39:05 PM	Reporter Name	TAI\us32_usr_ins22923
Last Calib Update	1/3/2023 2:39 PM	Batch State	Processed
Quant Batch Version	10.1	Quant Report Version	10.1
Acq. Time	1/17/2023 8:54 AM	Data File	tq011701.D
Sample Type	Sample	Sample Name	2.0 uL #3318-66-0.5A Lab Blank
Dilution	1	Acq. Method	tq22m1227

Sample Chromatogram

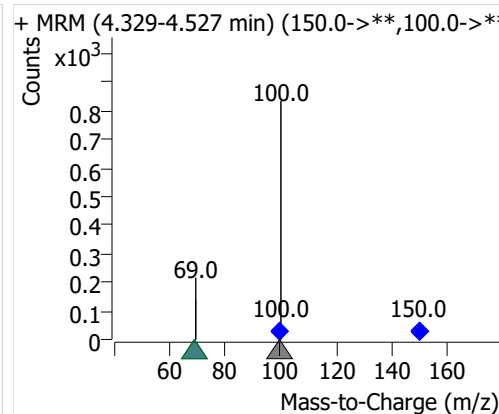
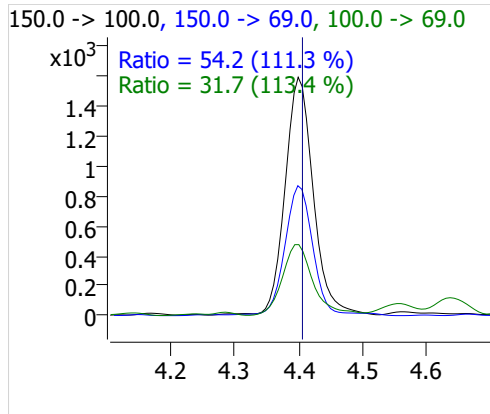
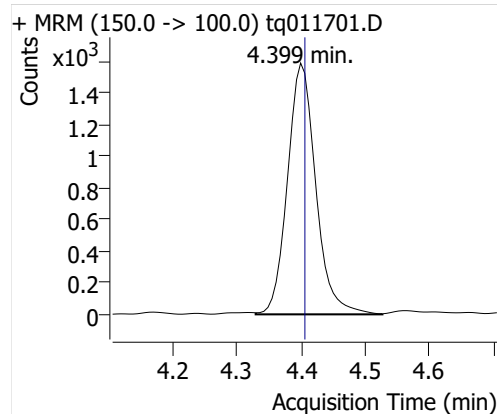


Compound	ISTD	RT	Resp.	ISTD Resp.	Resp. Ratio	Final Conc	Units
PFBA	6:2 FTOH-C13	4.399	4869	61789	0.0788	0.0235	ng

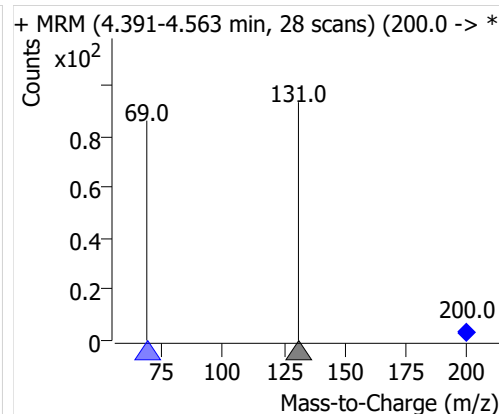
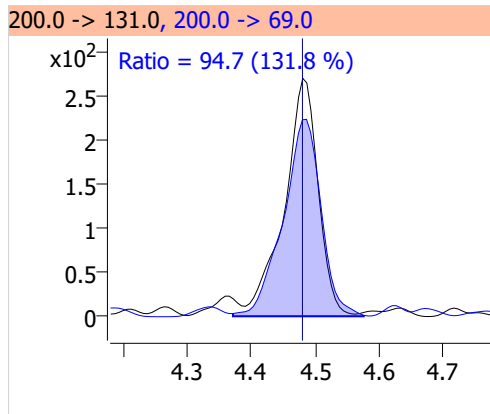
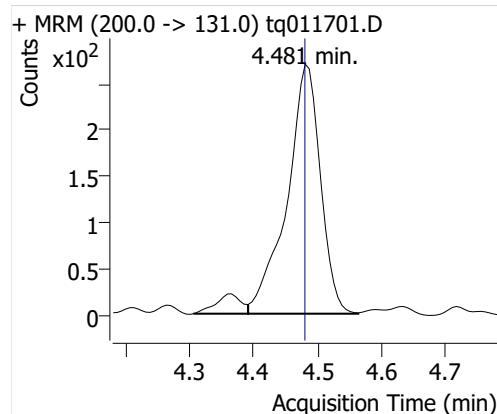
Quantitative Analysis Sample Report

Compound	ISTD	RT	Resp.	ISTD Resp.	Resp. Ratio	Final Conc	Units
PFPeA	6:2 FTOH-C13	4.481	976	61789	0.0158	0.0053	ng
PFHxA	6:2 FTOH-C13	4.645	1555	61789	0.0252	0.0182	ng
PFHpA	6:2 FTOH-C13	4.934	132	61789	0.0021	0.0023	ng
PFOA	6:2 FTOH-C13	5.348	1764	61789	0.0286	0.0473	ng

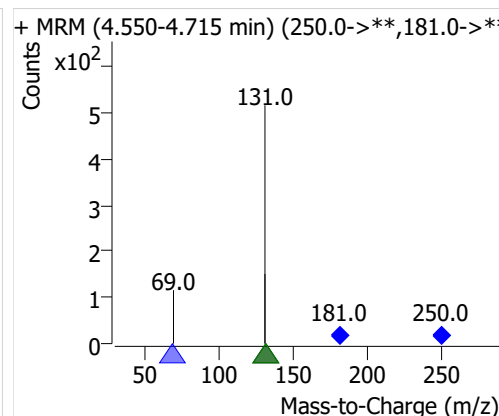
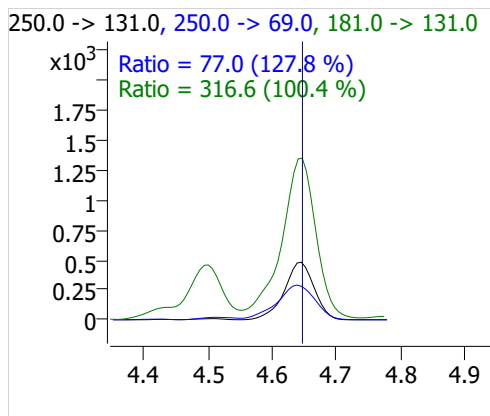
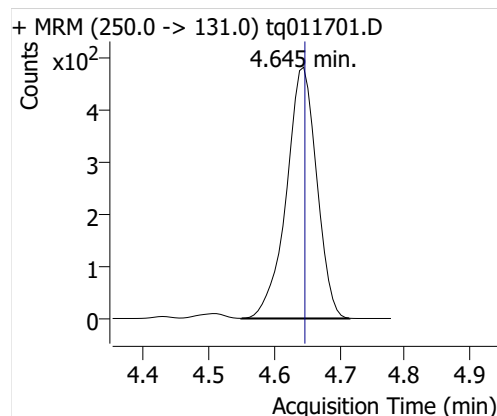
PFBA



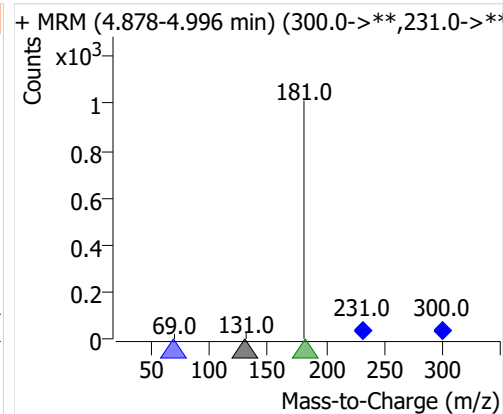
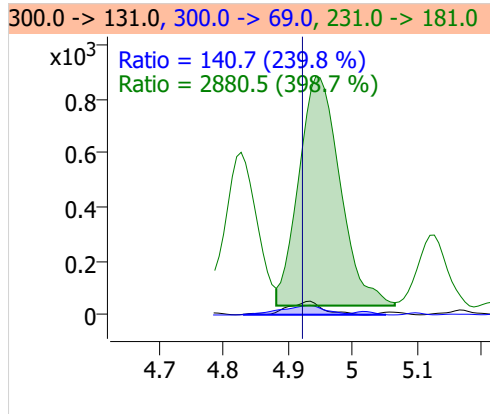
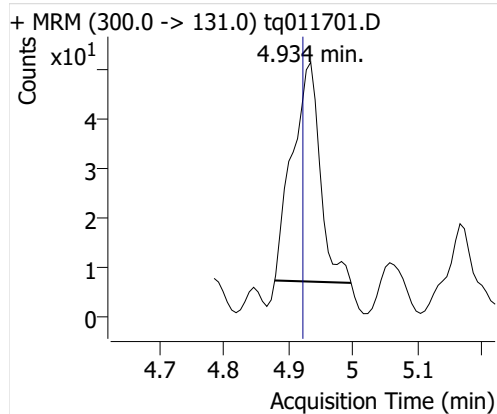
PFPeA



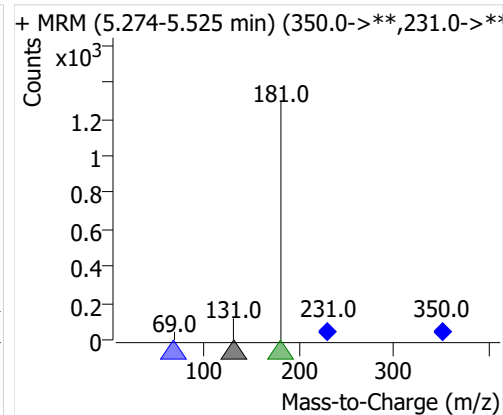
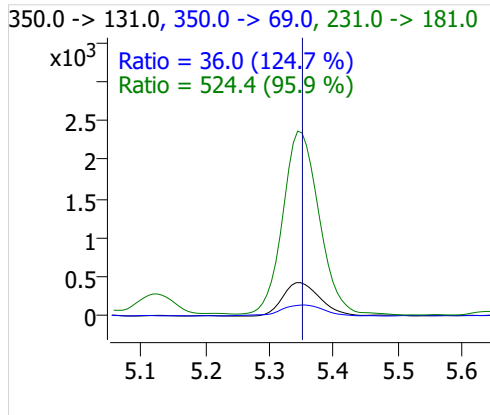
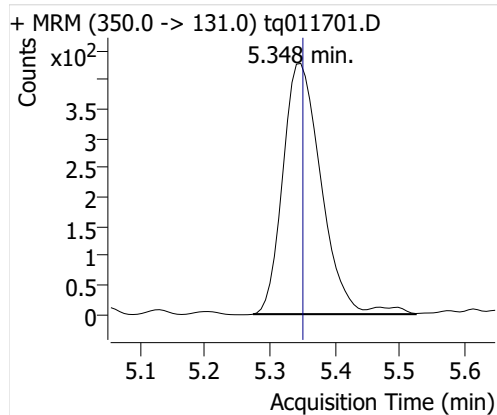
PFHxA



PFHpA



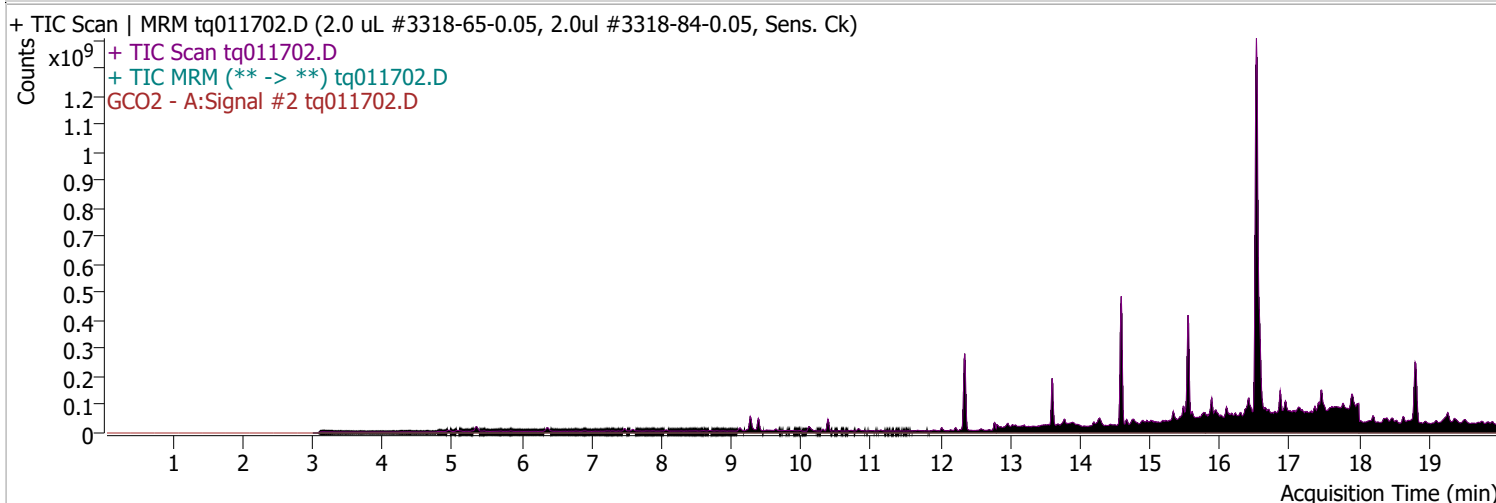
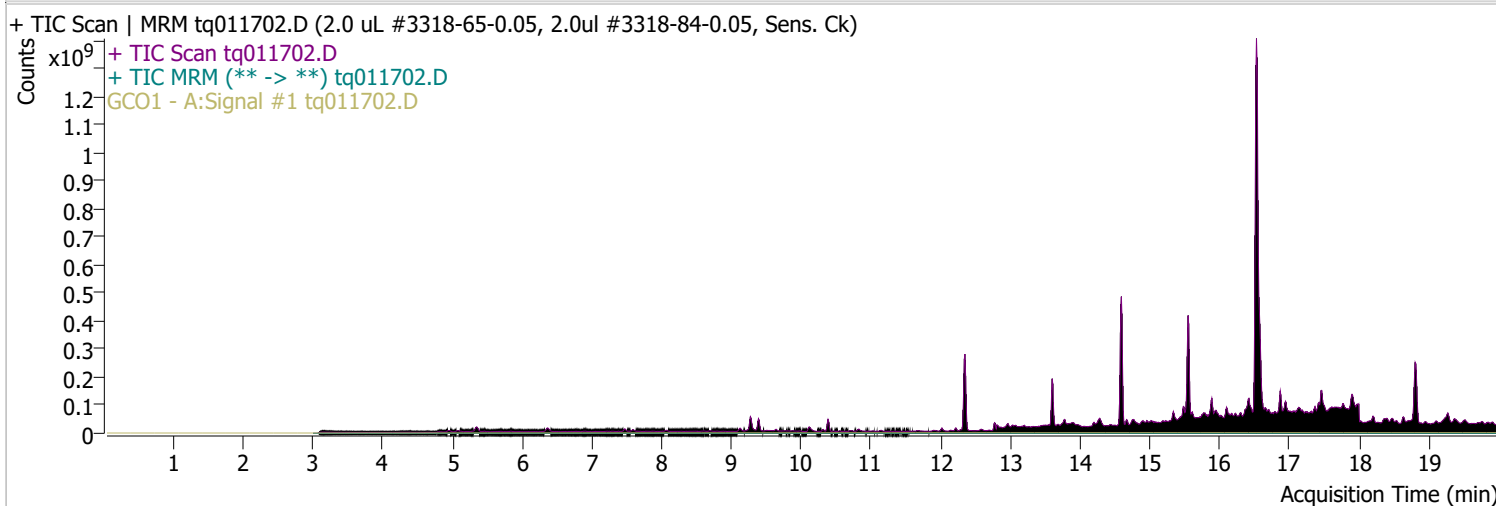
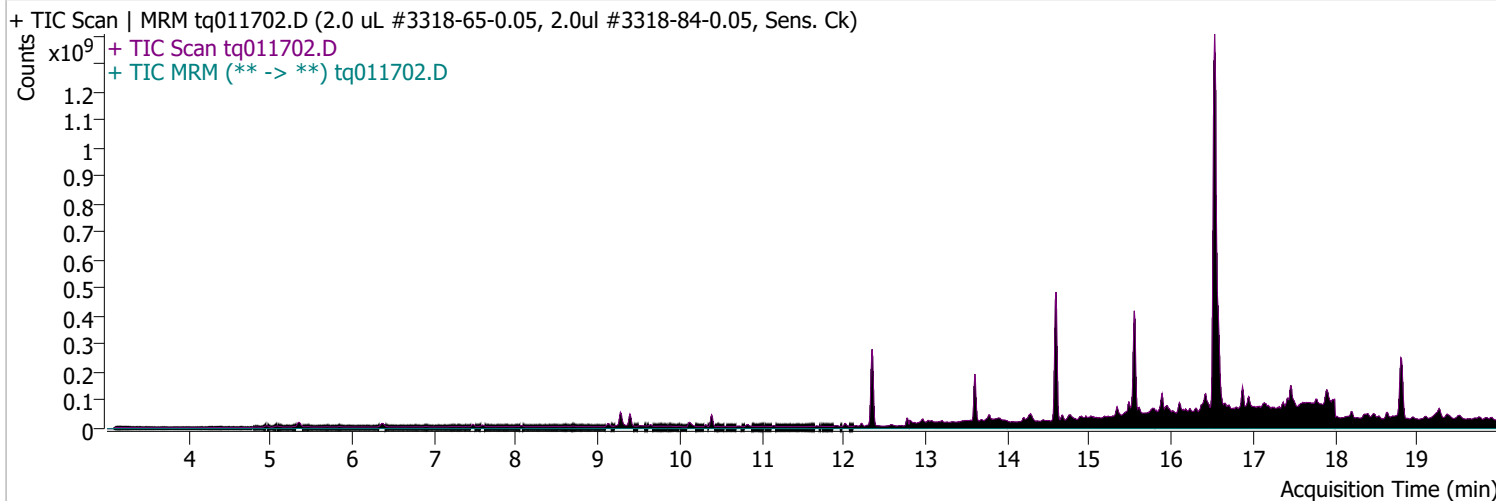
PFOA



Quantitative Analysis Sample Report

Batch Path	D:\MassHunter\GCMS\1\data\17jan23\QuantResults\17jan23.batch.bin		
Analysis Time	1/17/2023 10:28 AM	Analyst Name	TAI\us32_usr_ins22923
Report Time	1/18/2023 2:39:07 PM	Reporter Name	TAI\us32_usr_ins22923
Last Calib Update	1/3/2023 2:39 PM	Batch State	Processed
Quant Batch Version	10.1	Quant Report Version	10.1
Acq. Time	1/17/2023 9:17 AM	Data File	tq011702.D
Sample Type	QC	Sample Name	2.0 uL #3318-65-0.05, 2.0ul #3318-84-0.05, Sens. Ck
Dilution	1	Acq. Method	tq22m1227

Sample Chromatogram

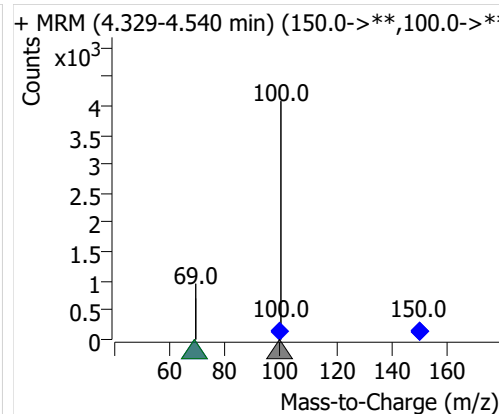
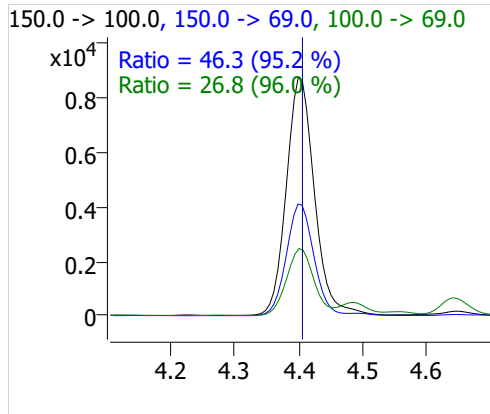
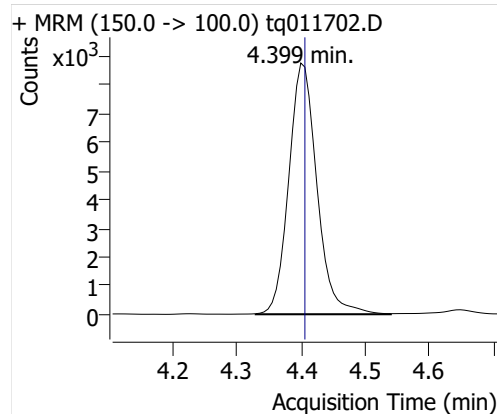


Compound	ISTD	RT	Resp.	ISTD Resp.	Resp. Ratio	Final Conc	Units
PFBA	6:2 FTOH-C13	4.399	26765	61315	0.4365	0.1303	ng

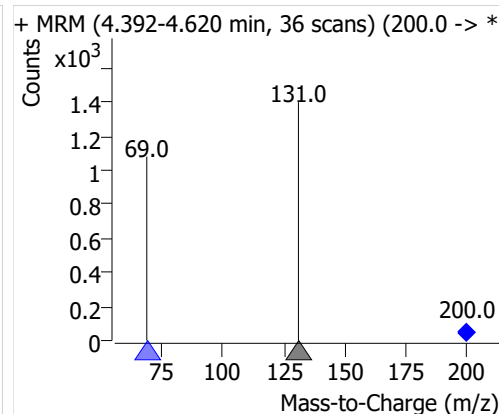
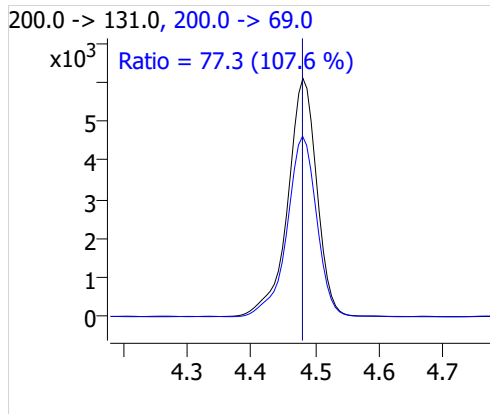
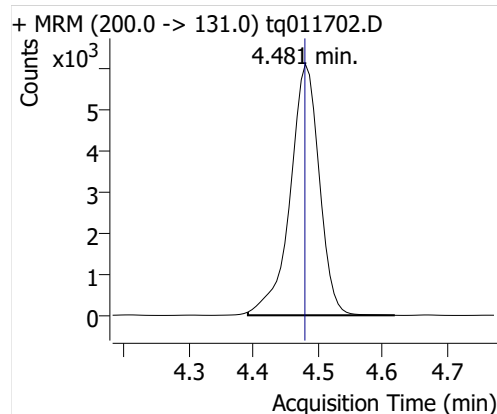
Quantitative Analysis Sample Report

Compound	ISTD	RT	Resp.	ISTD Resp.	Resp. Ratio	Final Conc	Units
PFPeA	6:2 FTOH-C13	4.481	19206	61315	0.3132	0.1054	ng
PFHxA	6:2 FTOH-C13	4.645	11761	61315	0.1918	0.1386	ng
PFHpA	6:2 FTOH-C13	4.920	8365	61315	0.1364	0.1445	ng
PFOA	6:2 FTOH-C13	5.348	157843	61315	2.5743	4.2653	ng

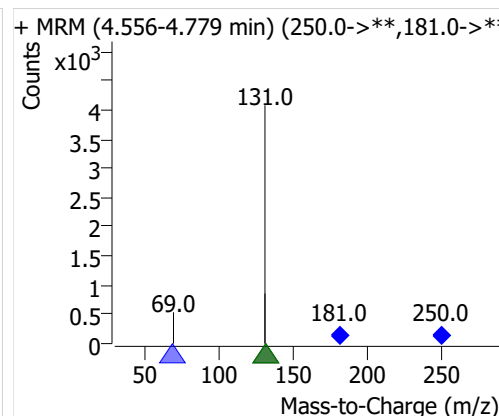
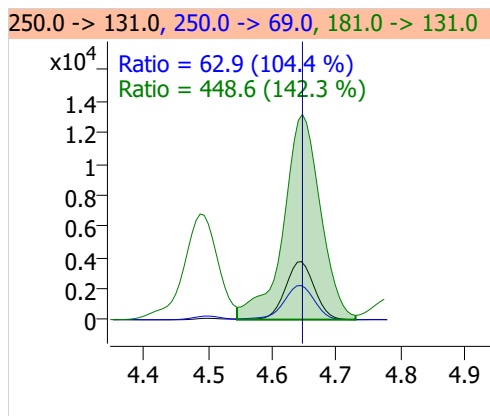
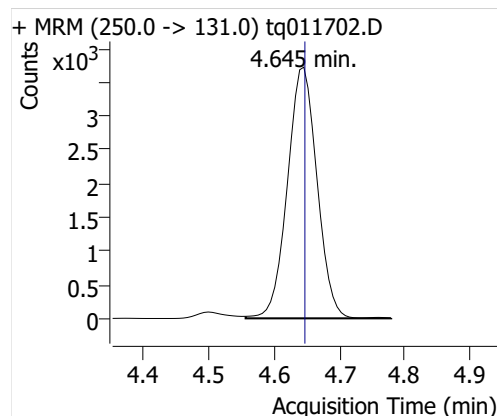
PFBA



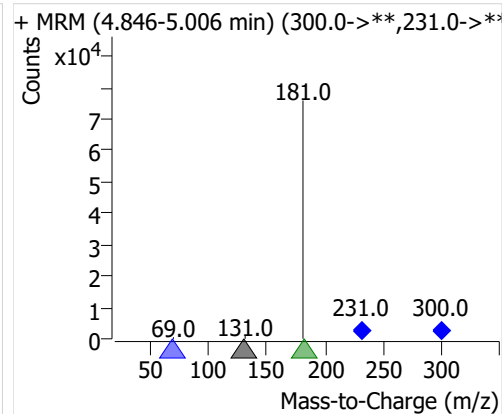
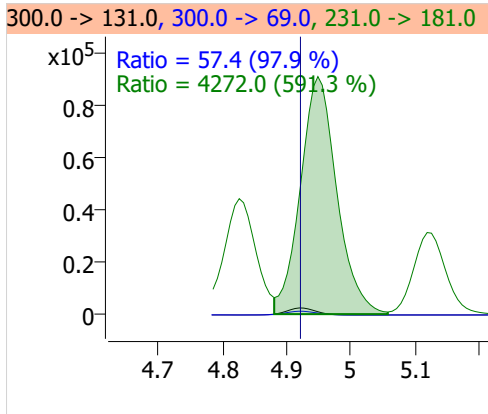
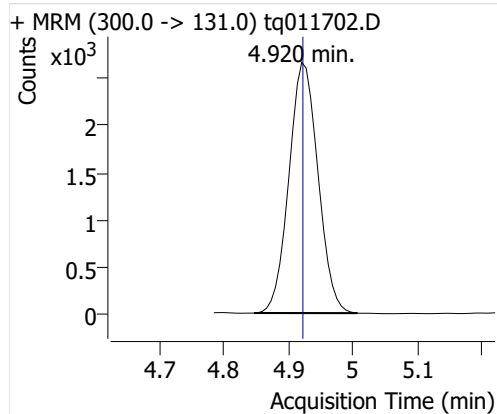
PFPeA



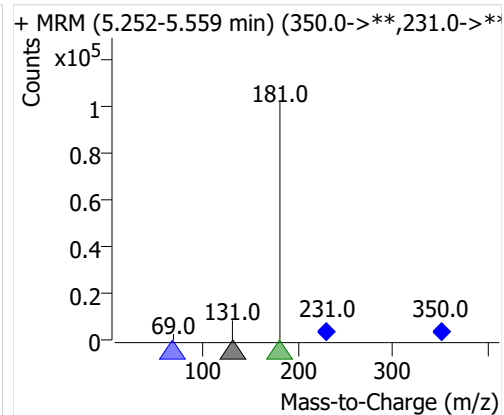
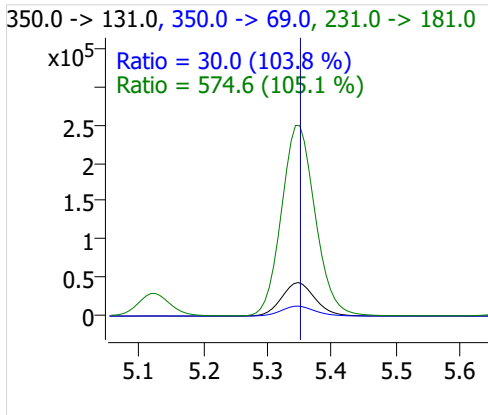
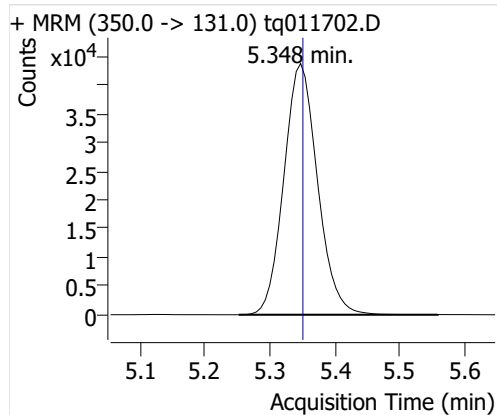
PFHxA



PFHpA



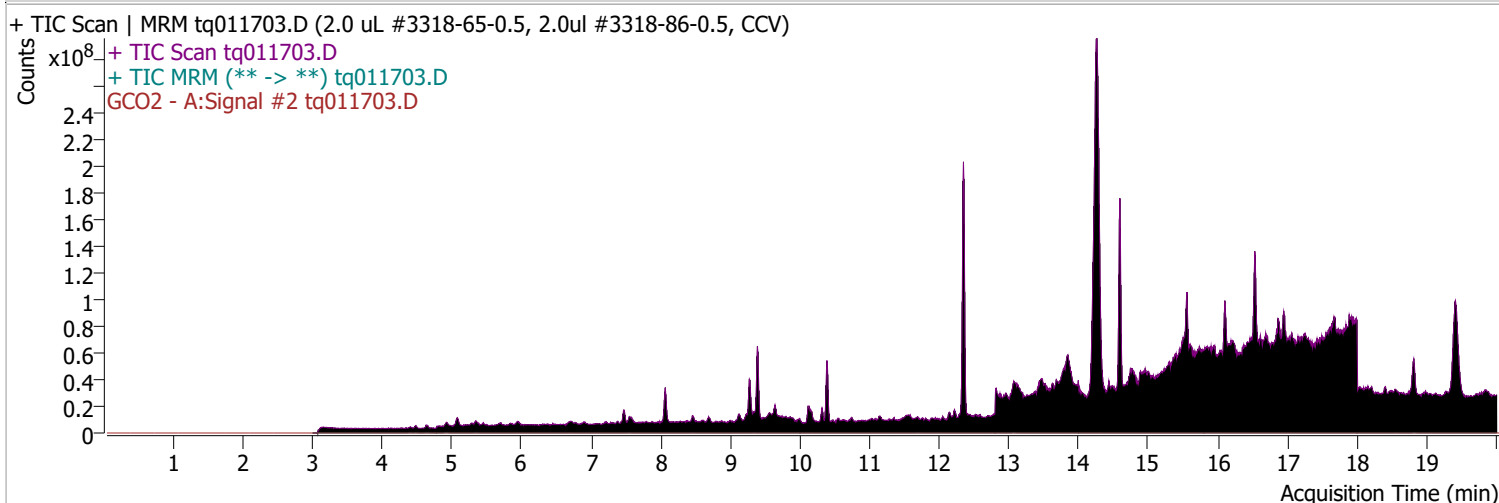
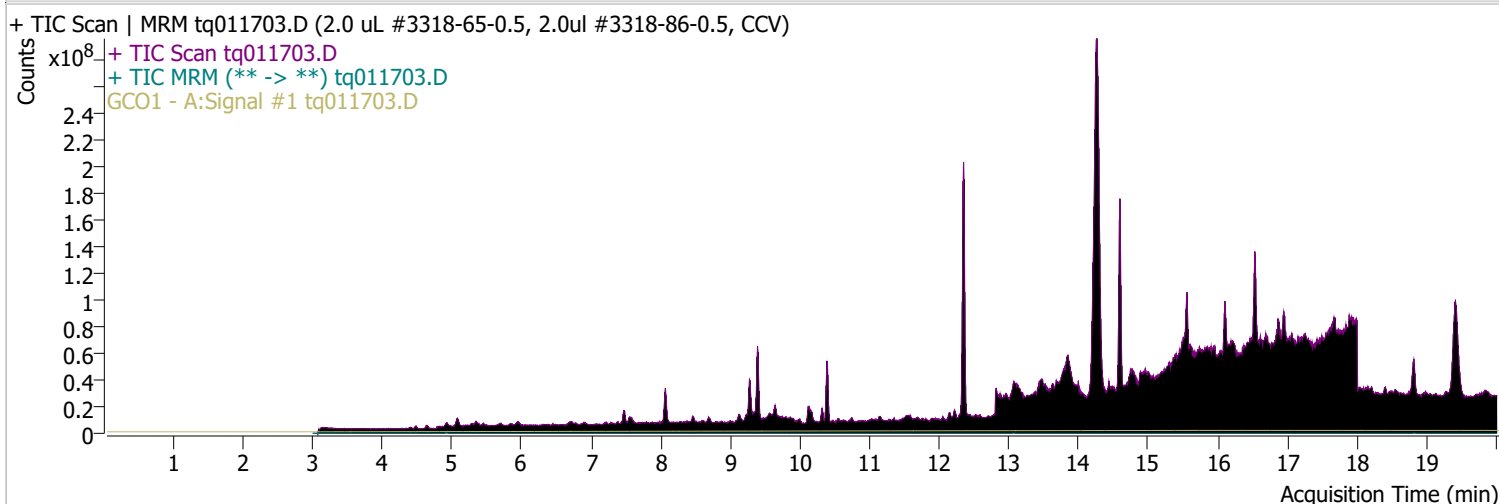
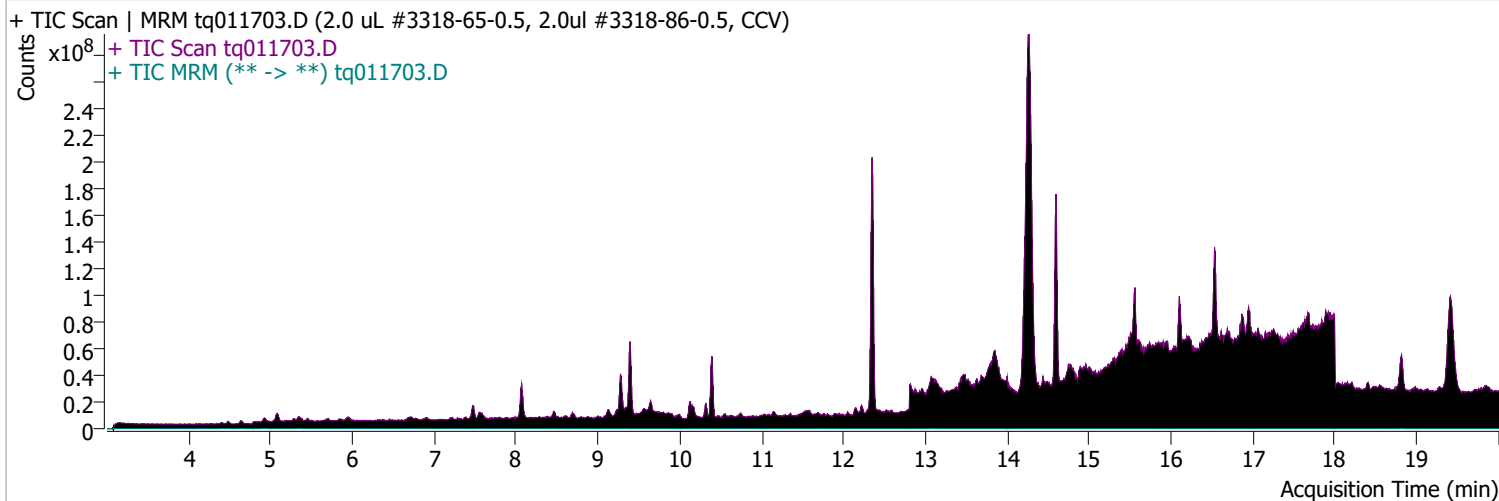
PFOA



Quantitative Analysis Sample Report

Batch Path	D:\MassHunter\GCMS\1\data\17jan23\QuantResults\17jan23.batch.bin		
Analysis Time	1/17/2023 10:28 AM	Analyst Name	TAI\us32_usr_ins22923
Report Time	1/18/2023 2:39:08 PM	Reporter Name	TAI\us32_usr_ins22923
Last Calib Update	1/3/2023 2:39 PM	Batch State	Processed
Quant Batch Version	10.1	Quant Report Version	10.1
Acq. Time	1/17/2023 9:41 AM	Data File	tq011703.D
Sample Type	CC	Sample Name	2.0 uL #3318-65-0.5, 2.0ul #3318-86-0.5, CCV
Dilution	1	Acq. Method	tq22m1227

Sample Chromatogram

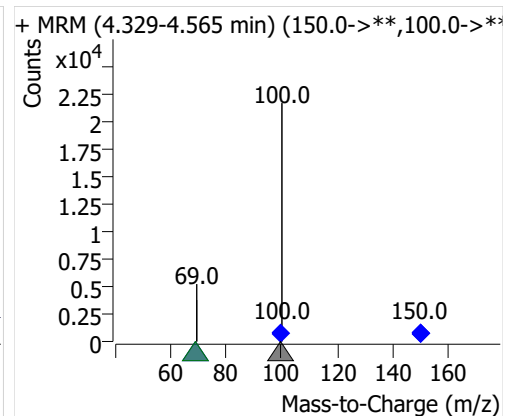
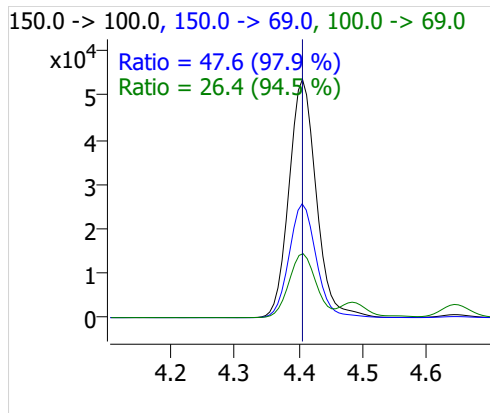
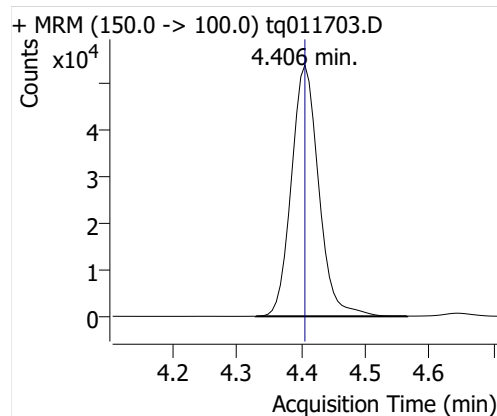


Compound	ISTD	RT	Resp.	ISTD Resp.	Resp. Ratio	Final Conc	Units
PFBA	6:2 FTOH-C13	4.406	158775	61730	2.5721	0.7676	ng

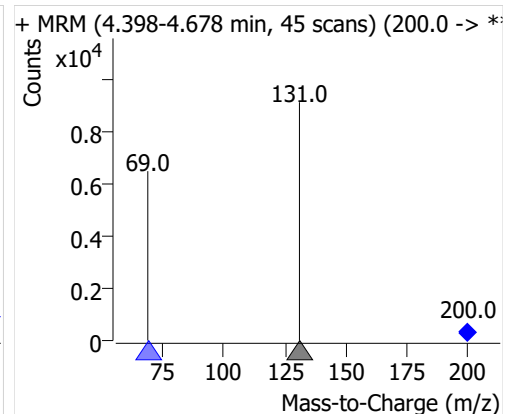
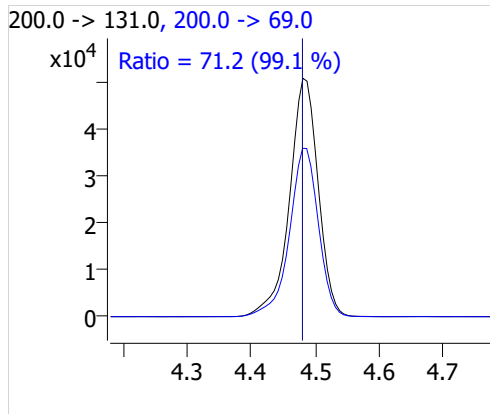
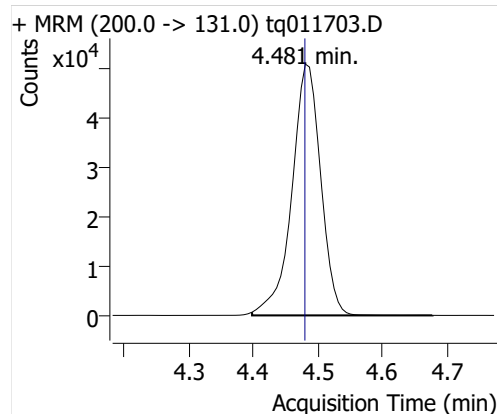
Quantitative Analysis Sample Report

Compound	ISTD	RT	Resp.	ISTD Resp.	Resp. Ratio	Final Conc	Units
PFPeA	6:2 FTOH-C13	4.481	157662	61730	2.5541	0.8591	ng
PFHxA	6:2 FTOH-C13	4.645	69655	61730	1.1284	0.8151	ng
PFHpA	6:2 FTOH-C13	4.927	43609	61730	0.7064	0.7483	ng
PFOA	6:2 FTOH-C13	5.348	28096	61730	0.4551	0.7541	ng

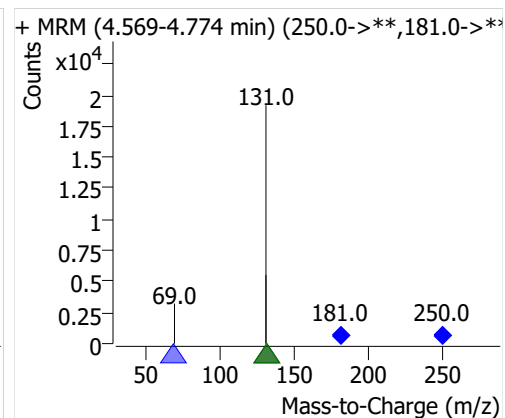
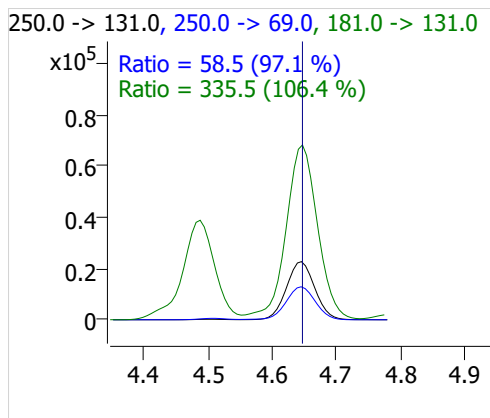
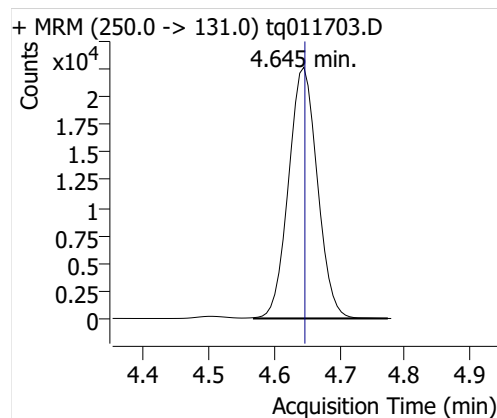
PFBA



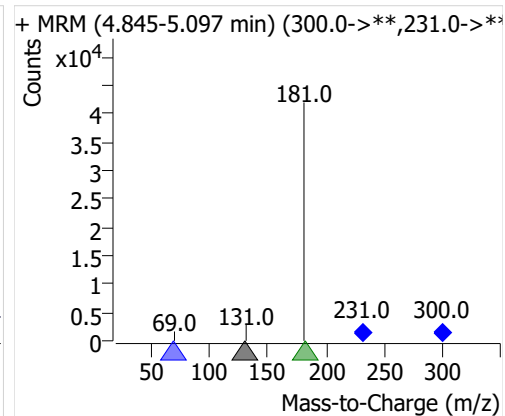
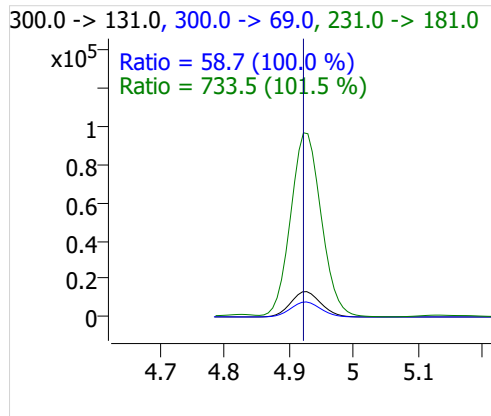
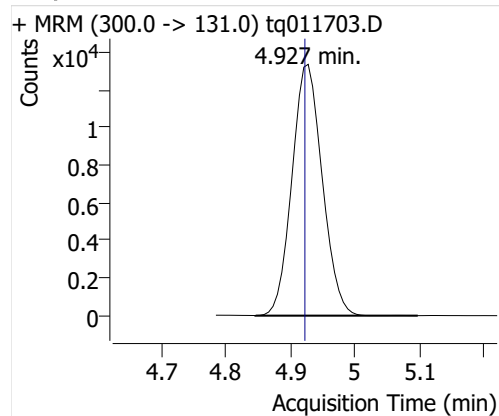
PFPeA



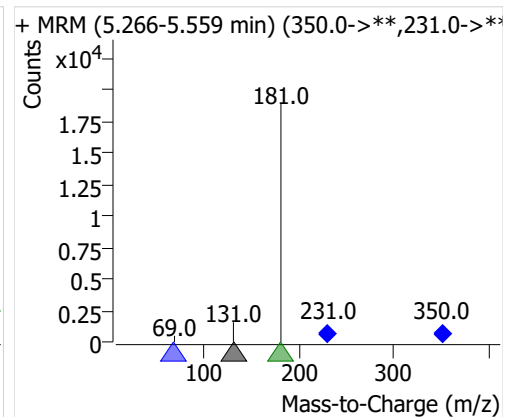
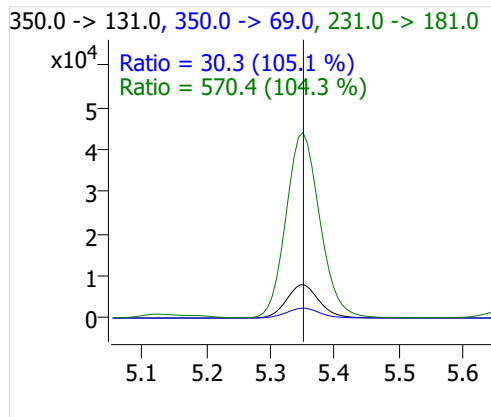
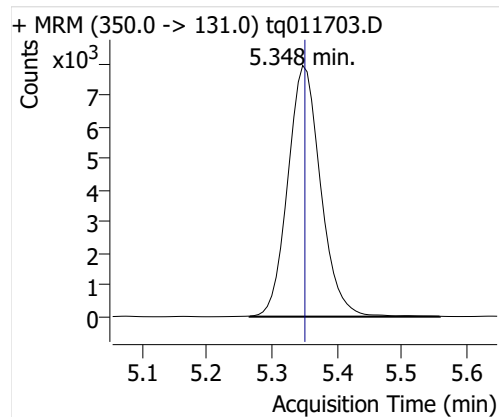
PFHxA



PFHpA



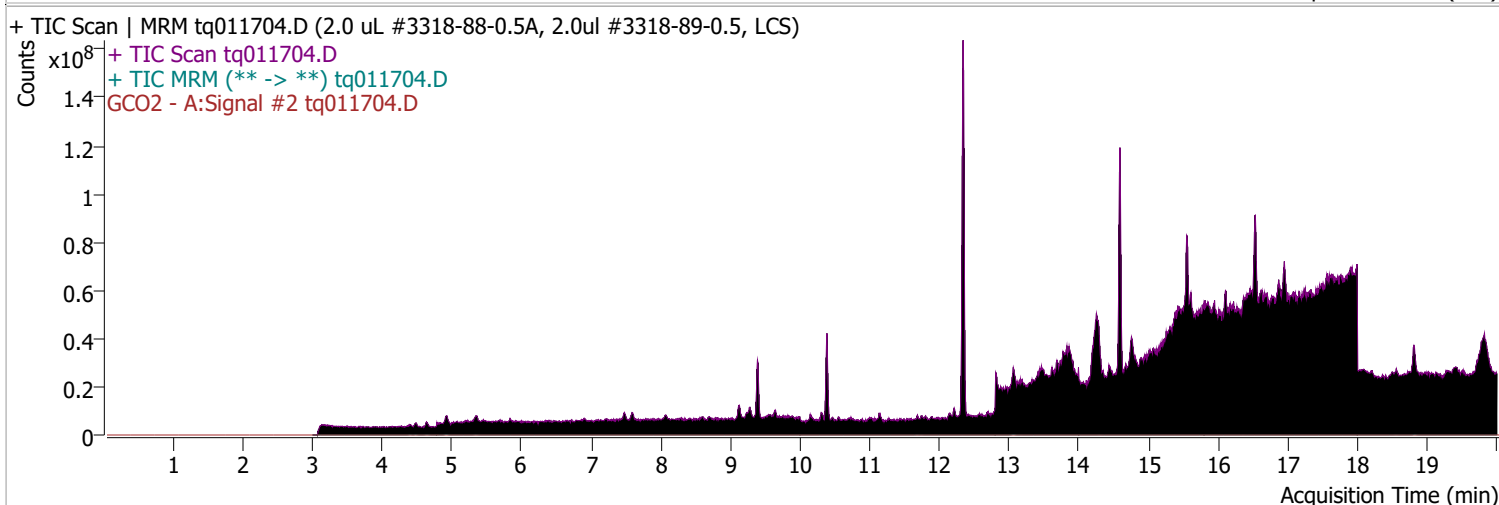
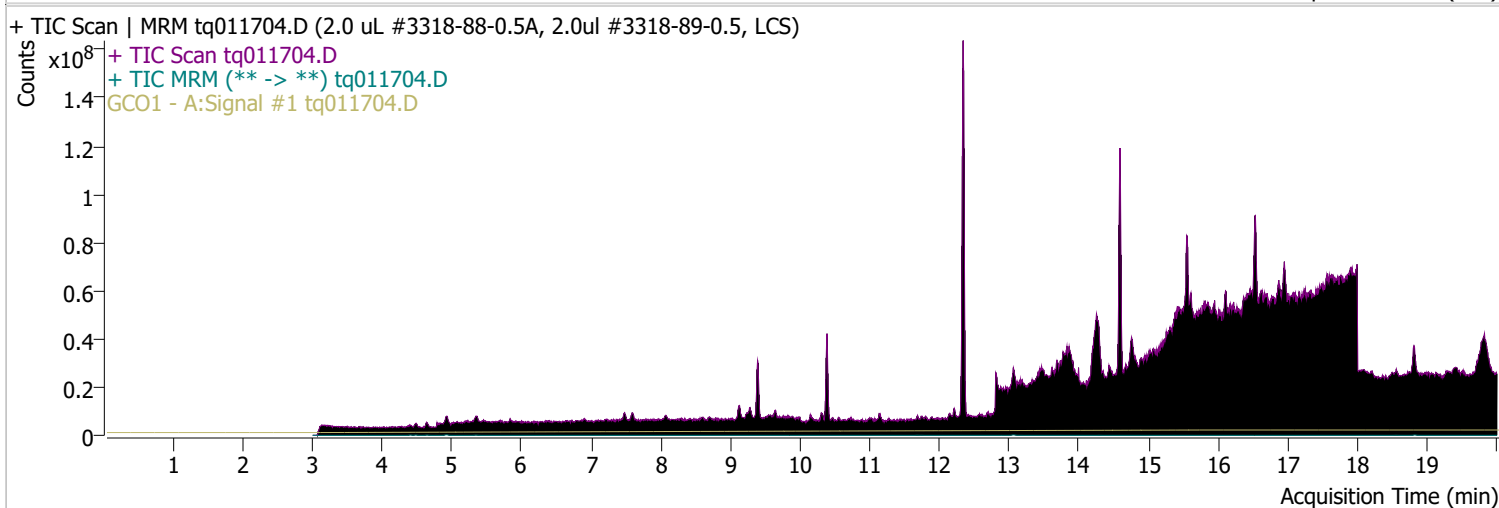
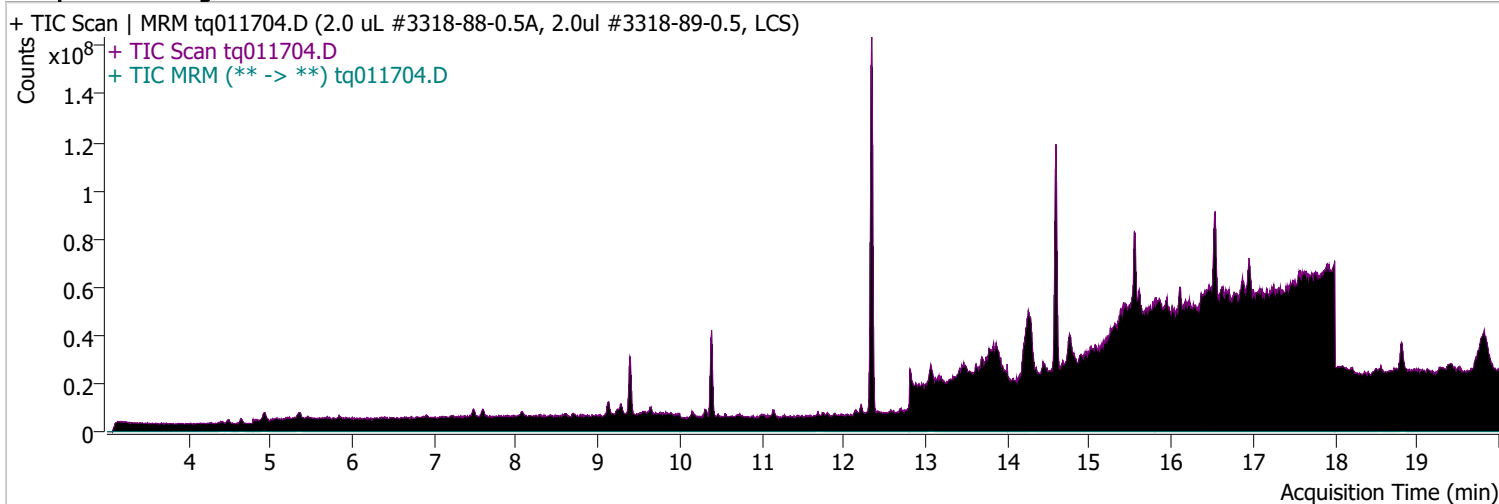
PFOA



Quantitative Analysis Sample Report

Batch Path	D:\MassHunter\GCMS\1\data\17jan23\QuantResults\17jan23.batch.bin		
Analysis Time	1/17/2023 10:28 AM	Analyst Name	TAI\us32_usr_ins22923
Report Time	1/18/2023 2:39:08 PM	Reporter Name	TAI\us32_usr_ins22923
Last Calib Update	1/3/2023 2:39 PM	Batch State	Processed
Quant Batch Version	10.1	Quant Report Version	10.1
Acq. Time	1/17/2023 10:05 AM	Data File	tq011704.D
Sample Type	QC	Sample Name	2.0 uL #3318-88-0.5A, 2.0ul #3318-89-0.5, LCS
Dilution	1	Acq. Method	tq22m1227

Sample Chromatogram

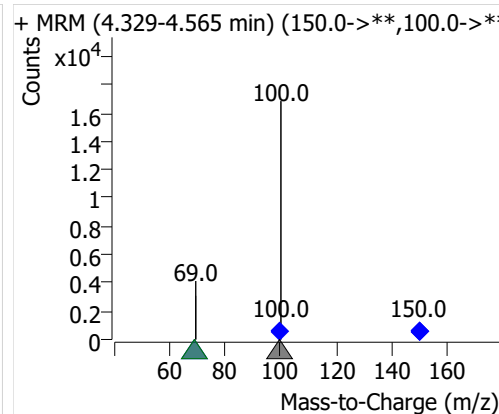
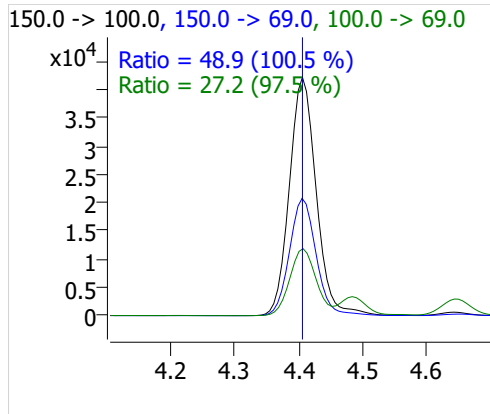
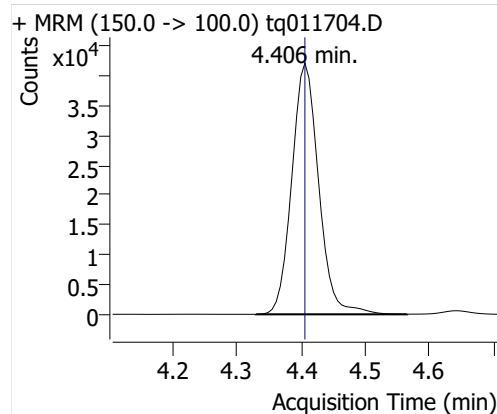


Compound	ISTD	RT	Resp.	ISTD Resp.	Resp. Ratio	Final Conc	Units
PFBA	6:2 FTOH-C13	4.406	122722	55997	2.1916	0.6540	ng

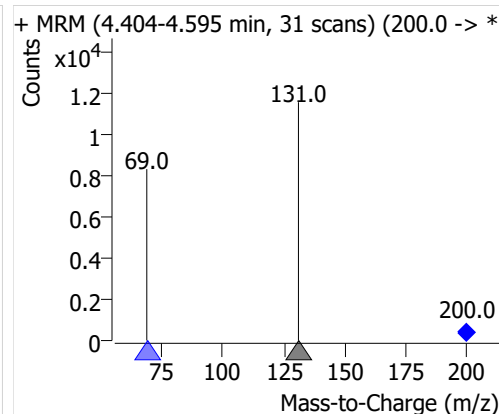
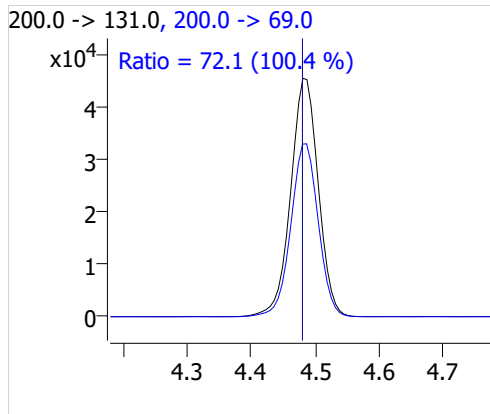
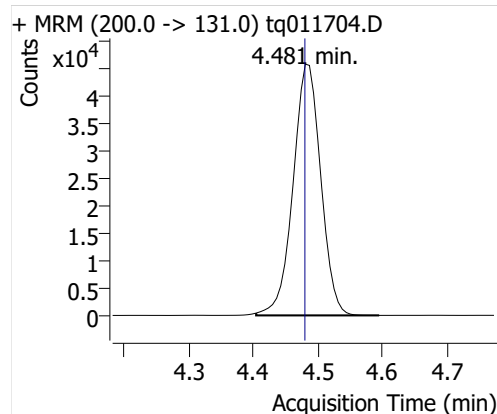
Quantitative Analysis Sample Report

Compound	ISTD	RT	Resp.	ISTD Resp.	Resp. Ratio	Final Conc	Units
PFPeA	6:2 FTOH-C13	4.481	136523	55997	2.4381	0.8201	ng
PFHxA	6:2 FTOH-C13	4.645	68091	55997	1.2160	0.8784	ng
PFHpA	6:2 FTOH-C13	4.927	43374	55997	0.7746	0.8205	ng
PFOA	6:2 FTOH-C13	5.348	24865	55997	0.4440	0.7357	ng

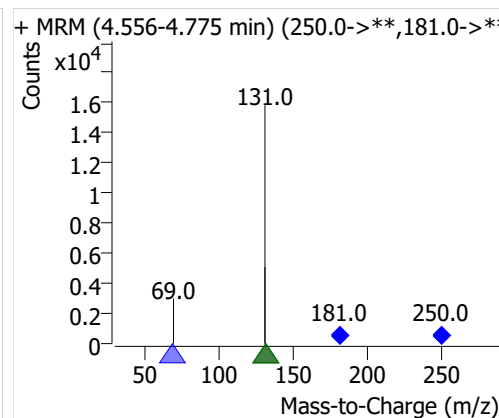
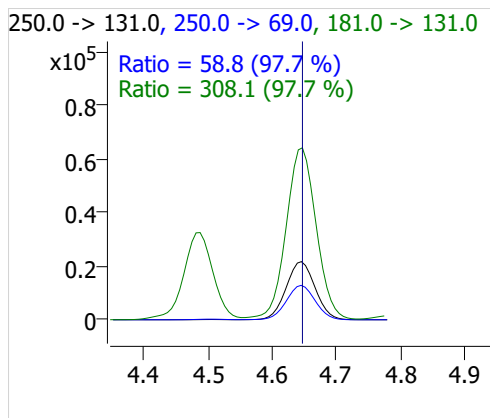
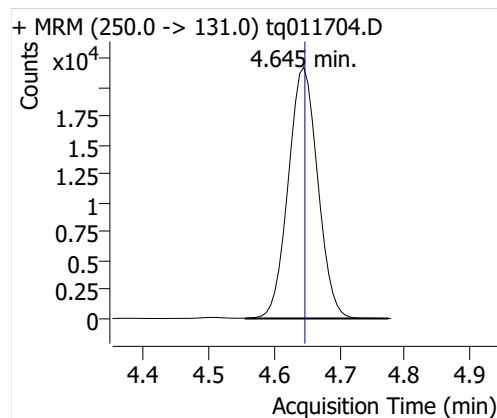
PFBA



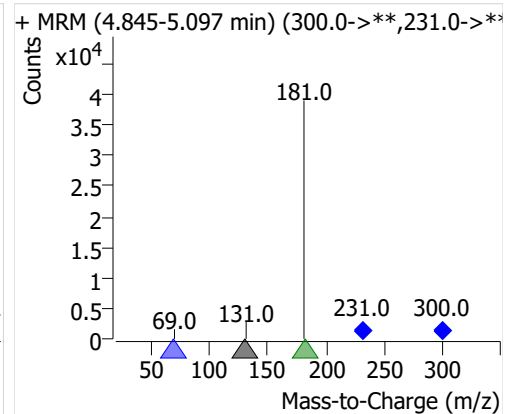
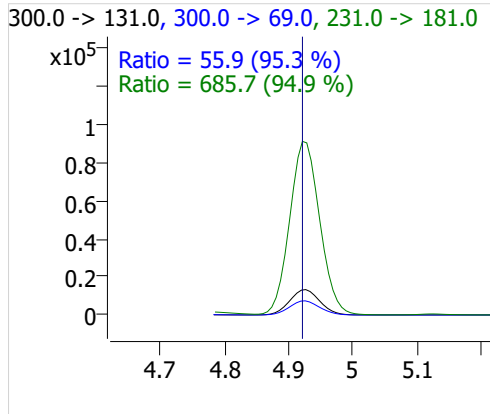
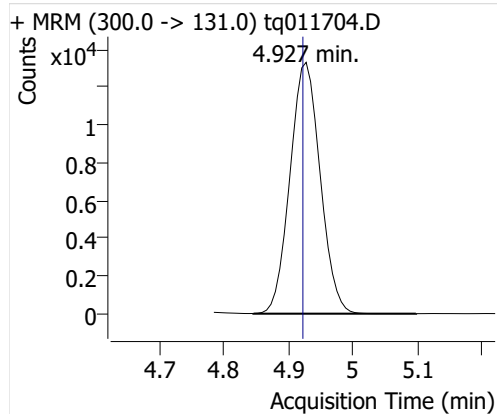
PFPeA



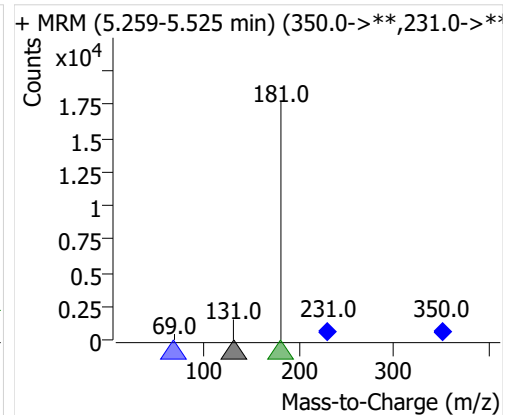
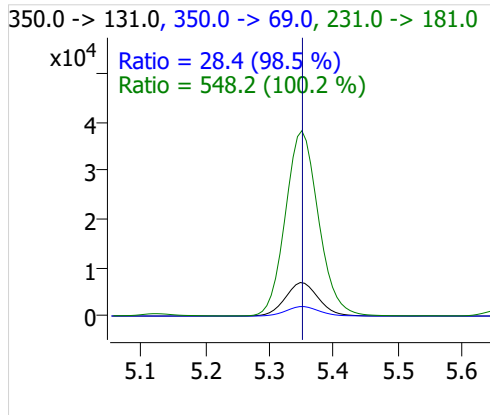
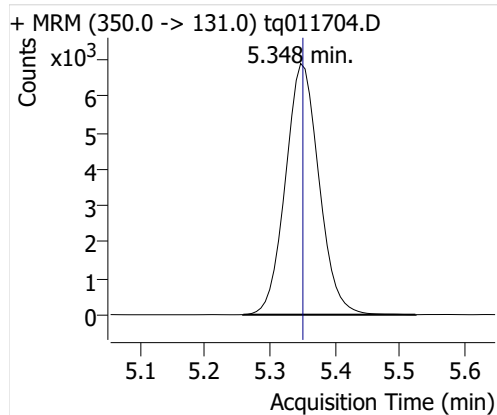
PFHxA



PFHpA



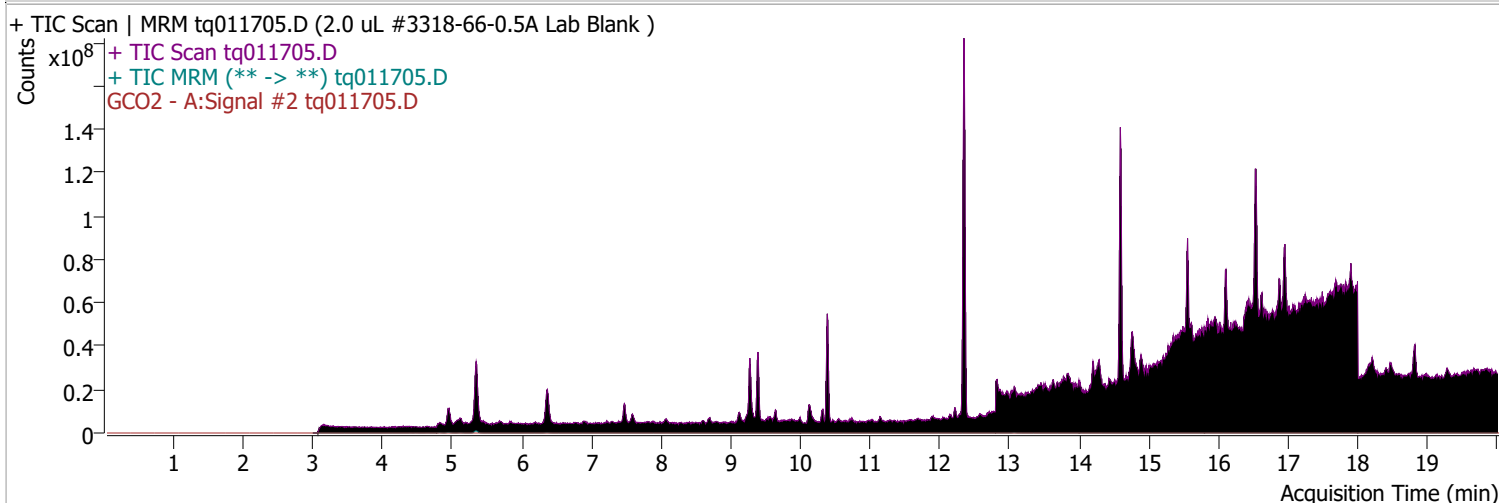
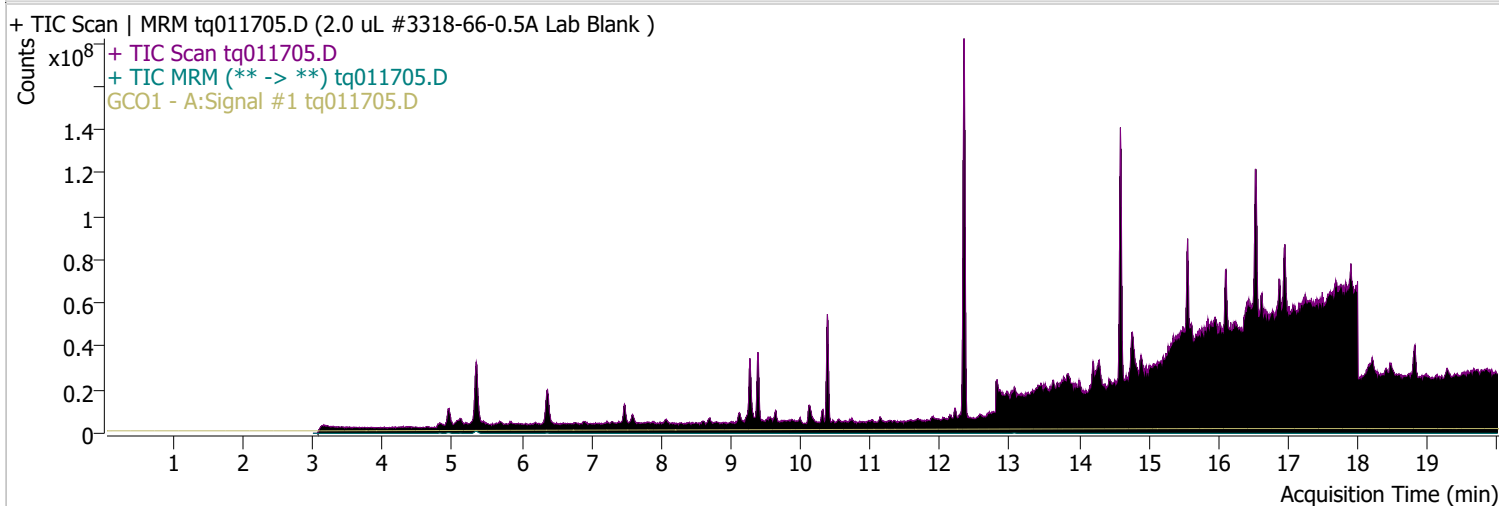
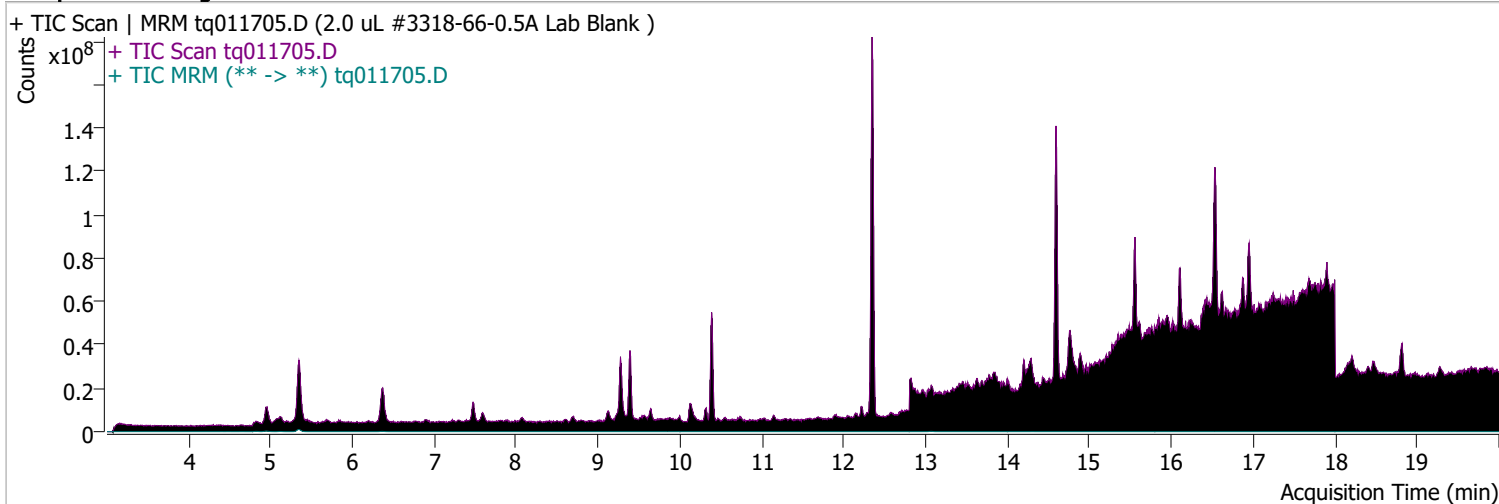
PFOA



Quantitative Analysis Sample Report

Batch Path	D:\MassHunter\GCMS\1\data\17jan23\QuantResults\17jan23.batch.bin		
Analysis Time	1/17/2023 10:28 AM	Analyst Name	TAI\us32_usr_ins22923
Report Time	1/18/2023 2:39:09 PM	Reporter Name	TAI\us32_usr_ins22923
Last Calib Update	1/3/2023 2:39 PM	Batch State	Processed
Quant Batch Version	10.1	Quant Report Version	10.1
Acq. Time	1/17/2023 11:11 AM	Data File	tq011705.D
Sample Type	Sample	Sample Name	2.0 uL #3318-66-0.5A Lab Blank
Dilution	1	Acq. Method	tq22m1227

Sample Chromatogram

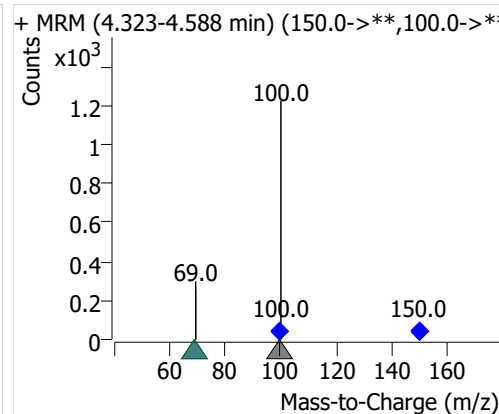
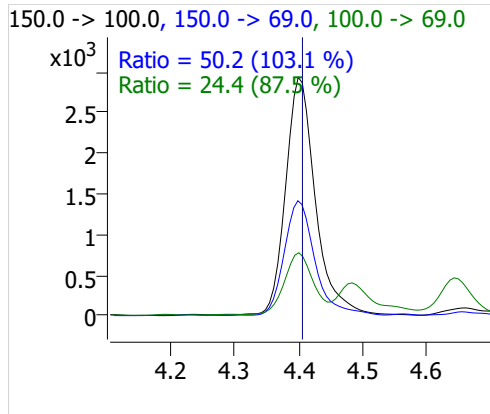
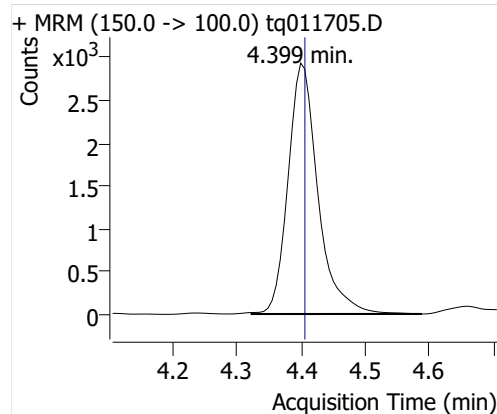


Compound	ISTD	RT	Resp.	ISTD Resp.	Resp. Ratio	Final Conc	Units
PFBA	6:2 FTOH-C13	4.399	9488	60318	0.1573	0.0469	ng

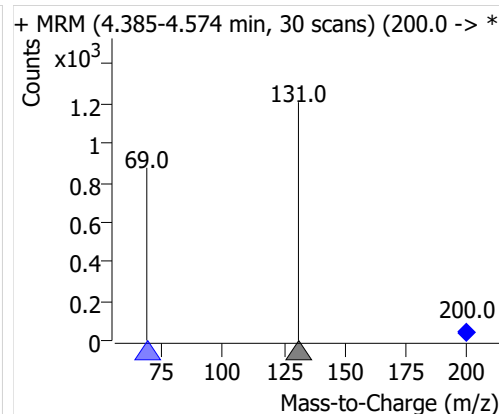
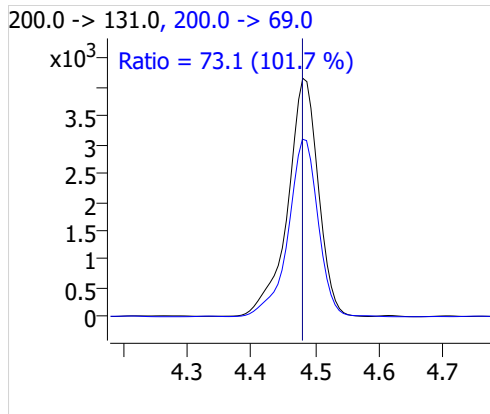
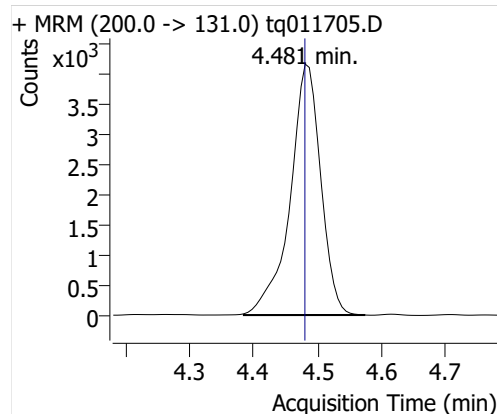
Quantitative Analysis Sample Report

Compound	ISTD	RT	Resp.	ISTD Resp.	Resp. Ratio	Final Conc	Units
PFPeA	6:2 FTOH-C13	4.481	13774	60318	0.2283	0.0768	ng
PFHxA	6:2 FTOH-C13	4.645	8630	60318	0.1431	0.1033	ng
PFHpA	6:2 FTOH-C13	4.920	4421	60318	0.0733	0.0776	ng
PFOA	6:2 FTOH-C13	5.348	277029	60318	4.5928	7.6098	ng

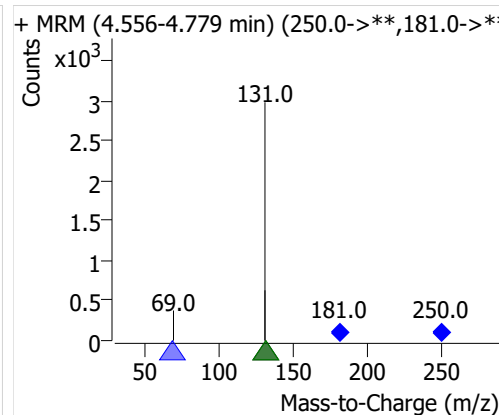
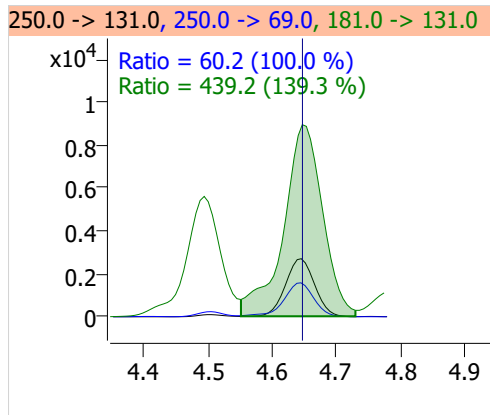
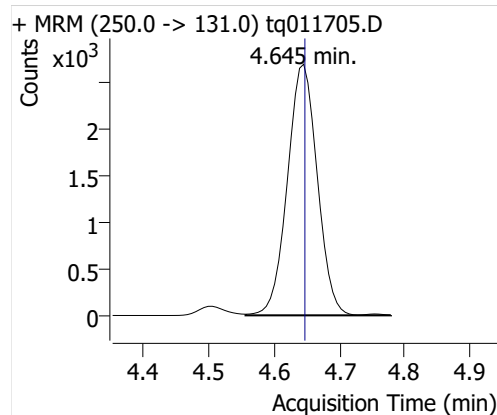
PFBA



PFPeA

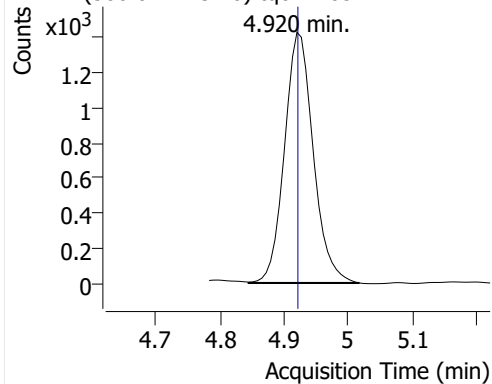


PFHxA

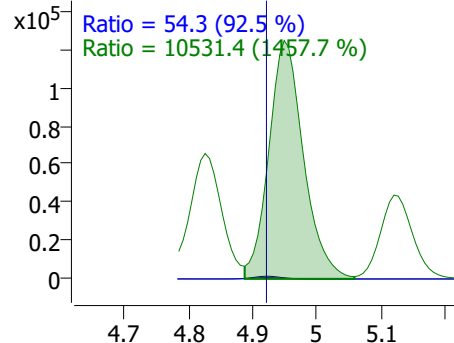


PFHpA

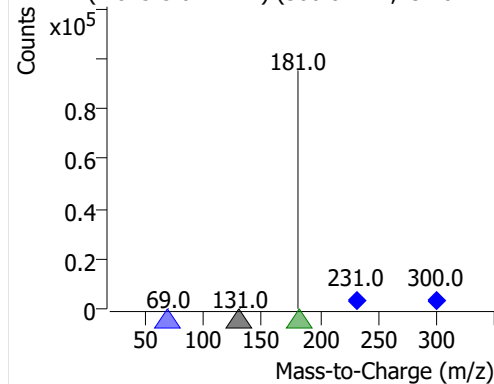
+ MRM (300.0 -> 131.0) tq011705.D



300.0 -> 131.0, 300.0 -> 69.0, 231.0 -> 181.0

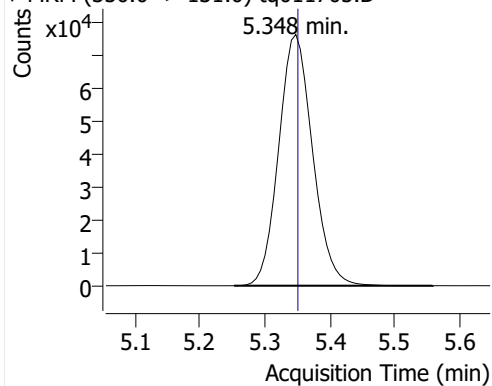


+ MRM (4.845-5.017 min) (300.0->**,231.0->*)

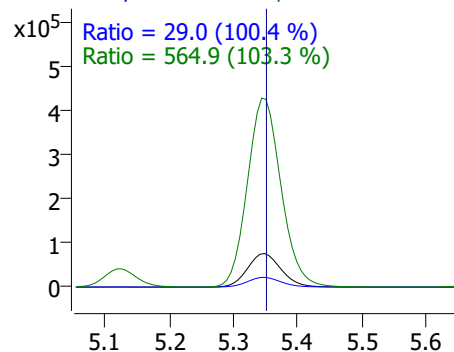


PFOA

+ MRM (350.0 -> 131.0) tq011705.D



350.0 -> 131.0, 350.0 -> 69.0, 231.0 -> 181.0



+ MRM (5.253-5.559 min) (350.0->**,231.0->*)

